

Burn For You by John Farnham
Capo 2, Key of B

Verse
C D Em|Am D

Chorus
Verse + C D

Bridge
Am D G Em
(C Bm) Am Am E

Careless whisper by George Michael
Capo 6, Key of F

Am7 | Dm7 | FM7 | Em7

Crush On You by Michael Buble
Key of F

Intro FM7 | (Bdim) Gm7 | C9, C7
Verse FM7 | Gm7, C9
Pre
Am7 | Dm7 | Fm7/G | C7sus

I Can't Make You Love Me by Tank
Capo 3, Key of Bb

CM7 | Em9 | Em9 | CM7
CM7 | G2/B | Em7 | Am7(4)

Pause
CM7 | D

My Girl by The Temptations
Key of C

Verse
C | F

PreChorus
C, Am7 | F, G

Forever by Damage
Capo 2, Key of A

Chorus
G, D | Cadd2 | (x2)
Bm, CM7 | (x2)
Cm, D7 | G

Verse
G Bm7 Am7 D |

Prechorus
Bm7, CM7 | Em7, D |
Bm7, CM7 | Am7, D7 |

I Swear by All 4 One
Capo 2, Key of Db

Intro
C | Am | Em | C | Am | Em | F, G

Verse
C | F/A, G/B | C | F, G |
Am | F | F/G, G7 |
C | F/A, G/B | C | F, G |
Am | C/G | D/F# | F/G, G7 |

Chorus/Bridge
C | Am | Em | F, G (x2)
Dm7 | ? | F/G G7 (x2)

Key Change Up 2 Capo 4
Ending
C | Am | F, G

How Far I'll Go from Moana
Key of E, Capo 4

Verse
C | Dm | Am | F |

Prechorus
Am | G | C | Fm/G# | Fm

Chorus
C | G | Am | F |
C | G | Am | Fm |

Key Change Up 1 Capo 5

I Wanna Know by Joe
Capo -1, Key of F#

C, G/B | Am7, G
G/B | Em7 | C#m7b5

Just Friends by Musiq Soulchild
Key of G

Gm7 Bm7 D9 Gm7 | F#7

Just My Imagination by Boyz II Men
Key of C

CM7 FM7 G

Let me love you by Mario
Capo 3, Key of Bb

Verse/Chorus:
Am | Em | Dsus2 | D

Bridge:
FM7 | CM7 | BbM7 | FM7/A
FM7 | CM7 | BbM7 | F/G

Lemonade by Jeremy Passion
Key of G

Bm7 | E7b9 | AM7 | AM7/Bb

Bakit Pa Ba by Jay R
Capo 5

Verse:
C | Am7 | Dm7 | G |

Prechorus:
Gm7, Em7 | Dm, Fm |
C, Am | Dm, G |

Chorus/Intro x2:
[C, Dm | Em, E |
Am], G | FM7, FM7 |
Am, Am | D7, Dm |

Key Change Up 1 Capo 6

Remember Me by Coco, Ernesto
Key of D

Capo 1 for Ernesto version
Capo 2 for Miguel version
Capo 3 for Hector version

Intro:
C | C | F | Gsus | (optional)

Verse:
Dm7 | C/E | FM7 | C/E |
Bb | Bb | Gsus4 | G |

Prechorus:
Am | Bb, C7 | F | G#7#5 |

Verse 2:
C | Fm/G# | C | Gm7, C7 |

Prechorus 2:
F | Em, E7/G# | Am, Ebdim |

Bridge:
G# | D | G, G+ | C, G | F, G |

I Thought She Knew by Nsync
Key of C

Intro:
Am7, Dm7b5 | C9|E, A9|C#|
Bb9, Am7, D7|F#| Dm7|G, G7b9 |

Verse:
C9|, Dm7b5 | Dm7b5 |
C9| | Dm7b5 |
Bm7, E7 | Am7, G, FM9 |
FM9 | Dm7|G, G7b9 |

Prechorus:
F9| | G/A, F | (lead in)
F | Em7, Am7, F |
F | Em7, E7, Ebdim7 |
G/D, A9|C#| A9|C#|
C/Bb, Bb | Dm7, G7b9 |

Ending:
FM7, G/F, F | Em7, Am7, G |
FM7, G/F, F | Em7, Am7 |
FM7, G/F, F | Dm7|G, G7susb9 |
C/Bb, Bb |
Am7, Ab9b5 | Dm7|G, G7b9 |
C9| | Dm7b5 | C

Key Change Up 2

Angels Brought Me Here
by Guy Sebastian
Key of D, Capo 2

Verse:
C | C | Em | Em |
F9| | F9| | D | D |

Prechorus:
Dm7 | C/E | FM7 | C/E |
Bb | Bb | Gsus4 | G |

Chorus:
C | Em/B | FM7 | Gsus, G |
C | Em7 | F | Gsus, G |
C | Em/B | F | D |
Dm7 | C/E | F9| | Gsus4 |

Bridge:
FM7 | FM7 | Emsus4 | Em |
Am | Am | Dsus4 | D |
Dm7 | C/E | FM7 | C/E |
Gsus4 | G |

Key Change Up 1 Capo 3

Taller, Stronger, Better
by Guy Sebastian
Key of Ab, Capo 1, 6/8

Verse:
G | Cm |

Prechorus:
Em | D | C | D |

Chorus:
C | D | C | D |
C, D | Em, G |
C | Cm | G | Cm |

Bridge:
F | G | G | F | (x2)
F | G | G | C |

Key Change Up 2

Maria Maria by Santana
Key of C

Chorus
Dm7 Am E7 Am

Verse
Am G F E

Bridge Verse+Chorus

Mysterious Girl by Peter Andre
Capo 2, Key of D

CM7, Am7 | F, G

No Diggity by Blackstreet
Capo 2, Key of A

Em Am7 on repeat
optional C, B7 fill

Pony by Glinuwine
Capo 4, Key of E

Am7 | Am7, Em7 |
Dm7 | Dm7, Em7, Am7

Right Here Waiting by Richard Marx
Capo 5, Key of C

Verse
G2 C2 Am7(4) D4 D G |
C2 Am7(4) D/F# Em

PreChorus
C2/A Em C2/A C2/D

Chorus
G D Em CM7 | D G |

Bridge
D|B C2/A G|B| C2 D4 D|F#|

So Sick by Neyo
Key of Gb

V/C:
Dm7, BbM7 | Gm7, C
Change Bbsus

Bridge:
C | Bb | C | Bb
C | Bb | C | Bb

Sweet Lady by Tyrese
Key of C

Am9 FM9 Dm9 E7

Sunday Morning by Maroon 5
Key of G

Bm7 | E7b9 | AM7 | AM7/Bb

Timeless by Justin Guarini
Capo 3, Key of C#

Em7 Am7 (D D7) B7

End Of Chorus D B7 Em

Thinkin' Out Loud by Ed Sheeran
Capo 2, Key of D

Verse/Chorus:
C, C/E | F, G

PreChorus:
Dm | G, C | Dm | G
Dm | G, Am | Dm | G

We found love right where we are
Am, G, F, C/E | Dm, G, C

Too Close by Next
Capo 2, Key of D

FM7 (FM7, Em7)

Turn Me On by Kevin Lyttle
Capo 4, Key of E

Am | G | F x 3 | G

Unchained Melody by Righteous Brothers
Capo 5, Key of C, 6/8

Verse
G Em C D |
G Em7 D D7 x2

Pre
G Bm Em7 Bm |
C D7 G G7

Bridge
C D C Bb |
C D G G |

Whenever, Wherever, Whatever by Maxwell
Key of G

Verse/Bridge
GM7 GM7 Em7 Em7 |
Am7 | D11 | GM7 | GM7

Pre
CM7/E | CM7/Eb | GM7 | Em7, Am7 | D11

Chorus
CM7, Bm7, Am7 | Am7/D | GM7 | Em7 x2

With You by Chris Brown
Capo -1

You Are Not Alone by Michael Jackson
Capo 4, Key of B

Verse/Chorus
G Em7 Am7 D7 x2

PreChorus
(F|E) C Am D Change D# F G

Bridge
G | (D# F/D#) Cm (D# F/D#) D | D#2

Key Change Up 2

Can We Talk
Capo 2

Intro/Chorus:
Gm7 | Gm7, Cm11 (tw), Fm9 (talk) | FM7 |
Fm7/D, G7 | Cadd9|G|

Verse:
Cm | Gau2 | Cm7 | F9 |
Fm7 | Fm7add11|Bb | Bbadd11|D | G7/D, G7 |

Prechorus:
Cm7 | Bdim | Cm7 | Am7b5 |
AbM7 | Gm7 | AbM7 | Gm7
AbM7 | Gm7 | Fm7 | Fm7/Bb |

Bridge:
AbM7 | Fsus2/G, G7 | Cm7 | AbmB |
D#|Bb | Am7b5 | AbM7 | Bove, Gm7 |

Bleauty
Key of Eb, Capo 3

Verse/Chorus:
Am7 | Dm7 | G/B, AM9|E|

Bridge:
Dm7, Dm7|C| Bm7add11, E7#5 |
G/A | AM9, A7 |
Dm7, Dm7|C| Bm7add11, E7b9 |
FM9, Asus4 | Dm7, Dm7|C, Am/E, E7

Last Night by Az Yet
Key of B, Capo -1

Intro/Verse/Chorus:
Em | F#dim7 | Em | F#dim7 |
Em | F#dim7 | Em, B7/D# | Em |

Prechorus:
Am7 | Em7 | Am7 | Em7 |
Am7 | Em7 | Em7, G/D | CM7, Am7/D, Bsus |

Bridge:
Am7 | B7 | Em, B7/F# | Em|G, E7|G# |
Am7 | B7sus, B7 | Em, G/D | G/D |

Let me love you by Mario
Capo 3, Key of Bb

Verse/Chorus:
Am | Em | Dsus2 | D

Bridge:
FM7 | CM7 | BbM7 | FM7/A
FM7 | CM7 | BbM7 | F/G

Kiss From A Rose by Seal/Az Yet
Key of G, Capo 3, 6/8

Intro:
Em, G(4) | E | (x2)

Verse:
E | C, D | E | C, D |
E | D, A | E, Em | C, D |
C, D | E |

Verse 2 change on second line
E, E, C | E | Em |

Chorus:
E | C, D | E | Dsus, D |
E | C, D | C, D | E |

Bridge:
D, A, D | A, G | (x4) | E |

Anytime by Brian McKnight
Key of Gb, Capo -1

Bm7 | GM7 | Em11, CM7
[F#7] "to say"

Vibin by Boyz II Men
Key of Gb, Capo -1

CM7, Bm7 | Em7 | Gm7/C, D | Em7

Burn by Usher
Key of F#, Capo -1, 60bpm

D | Bm | GM7, [Em7], A(2)

Moving Mountains by Usher
Key of F#, Capo -1, 58bpm

Em | C | G | D |

Fly Away by Lenny Kravitz
Key of C, 80bpm

A, C | G, D |

Race Against Time by Tank
Key of G, 90bpm

Em | Bm7 | Em | Bm7, B7 |

How Do I Say by Usher
Key of Eb, Capo 3, 88bpm

Intro:
FM7, Em7 | Dm7 |
FM7, Em7 | AM7 |
FM7, Em7 | Dm9 |
Bm7b5 | Esus4, E |

Verse/Chorus/Bridge:
FM7 | Am7 | FM7 | Am7 |
FM7 | Am7 |
Dm7, Dm7/C | Bm7b5, E |

Roll Wit Me by Boyz II Men
Key of E, 102bpm, Capo 4

Em | C | Am | C, D |

Thong Song by Sisqo
Key of E, Capo 4

Verse:
F | F | Am | Am |

Chorus:
Dm | Dm | Am | Am |

Bridge:
BbM7/A | CM7 | CM7/E | Bbm/F |

Key Change Up 1

How Deep Is Your Love by Dru Hill
Key of F#, Capo -1

Verse/Chorus:
Em | D | C | B7 |

Bridge:
C, D6 | Em | C, D | Em |
C, D | Em | C, D | B7

I Belong To You by Brian McKnight
Key of E, Capo -3

Bm7, F#m7 (3+), Em9 (4+) | Bm, F#m7 (3+), Em7 (4+) |
Bm7, F#m7 (3+), Em7 (4+) | C#m7, F#7 (2+), Bm7 (4+) |

Regulate by Warren G & Nate Dogg
Key of G, 95bpm

Em7 | Em7 | CM7 | Gaug or CM7, Bm7 |

La Donne E Mobile by Luciano Pavarotti
Key of B, Capo -1, 70bpm, 6/8

Verse:
C | G7 | C | G |
C | G | C/G | G7 | C (x2)

Verse 2:
D/F#, C | E7/G#, Am | G/B, C (hold) | F, G7, C |
G, C | G, C | (heh) G7, C/G |
G, C/E | G7/F, G7 (to run below) | C
[F/C, G7/C] (run)

Hidden Agenda by Craig David
Key of C

CM7, F/G

What's Your Flava by Craig David
Key of Ab, Capo 4, 108bpm

Verse:
Em

Prechorus:
Em7, A | Am, Em7 |

Chorus:
Em7 | Em7 | Em7, A7 | Em7 |

Confessions by Usher
Key of Ab, Capo 1, 69bpm

CM7, Em7 | (x6)

Change
Am, Bm7 | CM7 | or diff rhythm

I Do (Cherish You) by 98 Degrees
Key of Ab, Capo 1

Intro:
G(9) | Em9 | Am7 | D7sus4, D7 |

Verse:
G(9) | Am7 | G/B | C/D | (x2)

Prechorus:
C | G/B | C | C/D |

Chorus:
G(9) | Em9 | Am7 | D7sus4 |
G(9) | Em9 | Am7 | B7 |
Em, Em/D | C#m7b5 | Am7 | D7sus4 |

Bridge:
BbM7, Bb7 | Am7, Ab7 | Gm7 | D7sus4 |

Key Change Up 2 Capo 3

Incomplete by Sisqo
Key of E, Capo -3, 62bpm

Intro:
G(9) | B7sus4, B7 | Em9 | Bm |

Verse:
Em7 | Bm7 | Em7 | Bm7 |
Em7 | F#m7, Bm7 | Em7 | Am7 |

Chorus:
G(9) | F#m7 | G(9) | Bm7 |
G(9) | F#m7, Bm7 | Em7, A13 |
Bm7, E7 | Em7, A7 |

Bridge:
Gm7, C13 | FM7, FM7/D | Gm7 | G/A |

Key Change Up 1 on 2nd G/A

Rewind by Craig David
Key of G, 130bpm

Em7 | Em7 | Bm7 | Bm7 |
Em7 | Em7 | Bm7 | Am7, Bm7 |

Let's Get Married by Jagged Edge
Key of Db, Capo 1, 65bpm

Verse:
GM7, [Fm7], A6 |
D/A, F#7#5, A, [Bm7] |

Chorus:
GM7, Fm7 or A6 | (x3)
D/A, F#7#5, A |

Bridge:
GM7, F#7 | A6/B, A6 |
GM7, F#7 | Bm9 |

Insomnia by Craig David
Key of F#, Capo -1, 125bpm

Intro/Verse/Chorus:
C(9) | D(11) | Bm7 | Em9 |

Bridge:
C | B7 | Em | Em |
Am | D | B7 | B7 |

I Knew I Loved You by Savage Garden
Key of A, Capo 2, 85bpm

Intro:
G, Am7 | Bm, C |
Em, GM7/D | C(9) |

Verse:
G, Am7 | G/B, C |
G, Am7 | C, D | (best friend)

Prechorus:
Am7, G/B | C, D |
Am7, G/B | C(9) |

Chorus:
G, Am7 | CM7, D |

Bridge:
Bm7, Em7 | C(9), G |
Em7, C(9) | G, D |
Bm7, Em7 | C(9), G |
Em7, D | C(2) |

Key Change Up 1 Capo 3

No-One Else Comes Close by Joe
Key of C, 65bpm

Intro/Verse/Hook:
C(9), Am7 | FM9, G | (x2)
[E7 second time]

Prechorus:
Am7, Abug | Am7/G, D9/F# |
FM9, D9/G# | G |

Chorus:
FM9, G | C, G/B, Am7, Am7/G | (x3)
FM9, G |

Key Change Up 1

Insatiable by Darren Hayes
Key of Bb, Capo 3, 72bpm

Intro:
CM7 | Am7 | Em | Em |
Em, B7/Eb | G/D, A/C# |
C, G/B | Bsus4, B |

Verse:
Em, CM7 | D, B7 |

Prechorus:
Em, D6 | Bm, C |
Am7 | Am7 | Bsus4, B7 |

Chorus:
Em, B7 | Am7, B7 | (x2)

Hook:
Em, Em7/D | Em6/C#, CM7 |
C6, G/B | Am7, B7/F# |

Bridge:
G | B7 | Em | C, D (4) |
G | B7 | Em, C | Bsus4, B |

Key Change Up 1, Capo 4

Dance With U by Lemar
Key of Db, 113bpm, Capo 1

Verse/Chorus:
GM7 | FM9 | Eb6/9 | GM7 |

Bridge:
Cm7 | F7 | GM7 | Em7 |
Cm7 | F7 | GM7, FM7 | EbM7, FM7 |

If There's Any Justice by Lemar
Key of A, Capo 2, 90bpm

Verse/Chorus:
Em, EmM7 | Em7 | C | G, Baug |
C | B, Baug | Em, D | C |
Am7 | Bsus4, B7 | Em | Am6, C/E |

Prechorus:
C | G | B7 | Em |
C | G | C | B7sus4, B7 |

Bridge:
C | G | B7 | Em |
C | G | C | B7sus4, B7 |

Yeah by Usher
Key of Bb, Capo 3, 105bpm

Em, FM7 | FM7, Em |

Popya collar by Usher
Key of Eb, Capo 3, 107bpm

Verse/Chorus:
Am7, Dm7 | E7, Am7 |

Bridge:
FM7 | E7#5 | Am7 | Gm7, C7 |
FM7 | E7#5 | Am7 | E7 |

U Turn by Usher
Key of Eb, Capo 3, 91bpm

Am7, Dm7 | FM7, E7 |

It's Over Now by 112
Key of Db, 98bpm, Capo 1

Verse/Chorus:
Dm7 | Dm7 | Am7 | Am7 |

Bridge:
Dm7 | Abdim7 | Am7 | FM7 |
Bm7b5 | E7/G# | Am | C, A7 |
Dm7 | Abdim7 | Am7 | FM7 |
Bm7b5 | E7/G# | Db/E | E7 |

Peaches & Cream by 112
Key of Ab, 102bpm, Capo 1

Em | Em | Bm | Bm | (x2)
Change in chorus
B7 'girl you taste so good'

Dance With Me by 112
Key of Ab, Capo 1, 102bpm

D | D | D | D |
G | G | Gm | Am7/G, Am7 |

Summer Jam by Underdog Project
Key of G, 130bpm

Verse/Chorus:
Em | C, D | Em | Am7, Bm7 |

Prechorus:
CM7 | Bm7 | Am7 | Em7 |
CM7 | Bm7 | Am7 | B7 |

Miss California by Dante Thomas
Key of E, 101bpm, Capo 4

Verse:
Am | Dm6 | Em7 | Am |

Chorus:
Am | Dm7 | E7 | Am |

Hey Lover by LL Cool J & Boyz II Men
Key of Eb, Capo 3, 88bpm

Am7, Dm7 | Dm7, Em7 |
[A7] (4th), Dm7 | Dm7/C | Em7 |

In My Bed by Dru Hill
Key of Ab, 95bpm, Capo -1

Am7 | Am7 | E7sus4 | E7sus4 |

So Sick by NeYo
Key of F#, 95bpm, Capo 1

Verse/Chorus:
Em, CM7 | Am9, D |
Lone chord - Csus

Bridge:
D | C | D | C |

Sexy Love by NeYo
Key of Eb, 94bpm, Capo 3

Verse/Chorus:
FM7, G | Em7, FM7 | (x3)
baby girl FM7 FM7 | FM7, G | (x1)

Bridge:
Dm7 | Em7 | EbM9/F | F/G | (x2)

Too Close by Next
Key of D, 106bpm, Capo 2

Dm7 | G6 |

American Woman by Lenny Kravitz
Key of Eb, Capo 3

Am *whole way*

Guitar solo

Down to Abm,
then back to Am

I Gotta Be by Jagged Edge
Key of A, 55bpm, Capo 2

CM7, D | Bm7, CM7 |

Oh My God OMG by Usher
130bpm, Key of G

Em | D | Bm7 | CM7 |

Wild Wild West by Sisqo & Will Smith
107bpm, Capo 1, Key of Db

Verse/Chorus:

Dm, G7

Prechorus:

F | G7, Am | Dm7, G7 | Dm7 |

Got To Get It by Sisqo
102bpm, Key of Db, Capo 1

Am7 | Am7 | Dm7 | Dm7 |

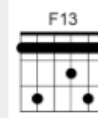
Your Love Is Incredible by Sisqo
61bpm, Key of A, Capo 2

Em7 | Bm7 |

Unleash The Dragon by Sisqo
Key of B, 96bpm, Capo -1

Am | G | FM7 | E7 |

Promise by Jagged Edge
Key of Ab, 64bpm, Capo 1



CM9[7], D | Em9 *4th time*>Cm7, F13 |

Promise by Jagged Edge JD Remix
88bpm, Key of C

FM7 | Em | Em | FM7 |

Goodbye by Jagged Edge
Key of F#, Capo -1, 65bpm

G(2)[M7] | Em7 | D | CM7 |

**Woman Trouble by Craig David
& Robbie Craig & Artful Dodger**
Key of Eb, Capo 3, 130bpm

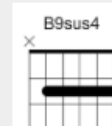
FM7, Em7 [E7] | Am7, FM7

**Please Don't Turn Me On
by Artful Dodger ft Lifford**
Key Of B, Capo - 1, 130bpm

Em | FM7 | Em7 | Am7, Bm7 |

*Tempo is 65 (half time) in
verses/prechorus/bridge*

Something by Artful Dodger ft Lifford
Key of Bb, Capo 3, 128bpm



Bm7 | Bm7 | CM7 | CM7 |

Optional chords replacements

B9sus4 | B9sus4 | CM9 | CM9 |